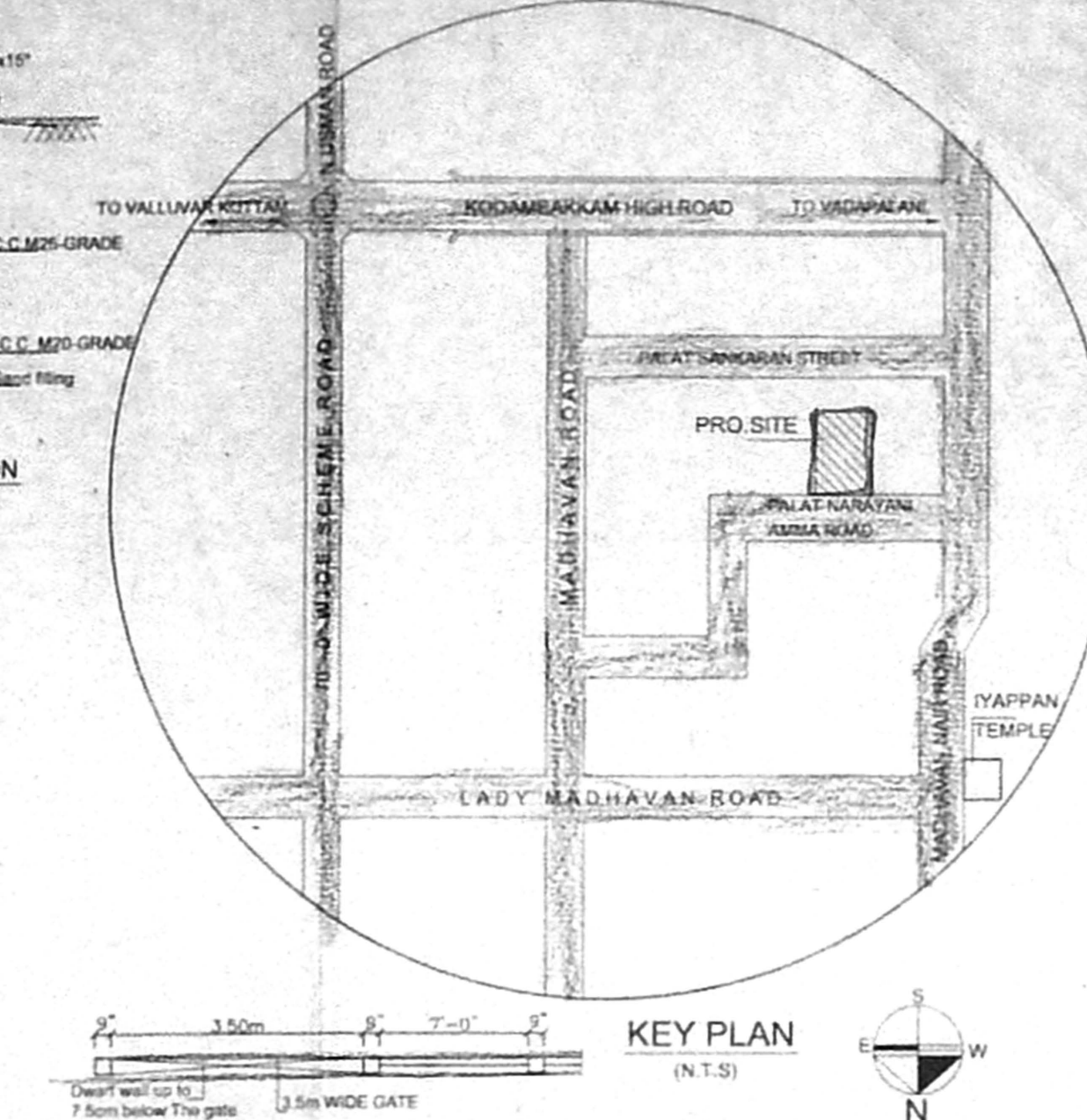
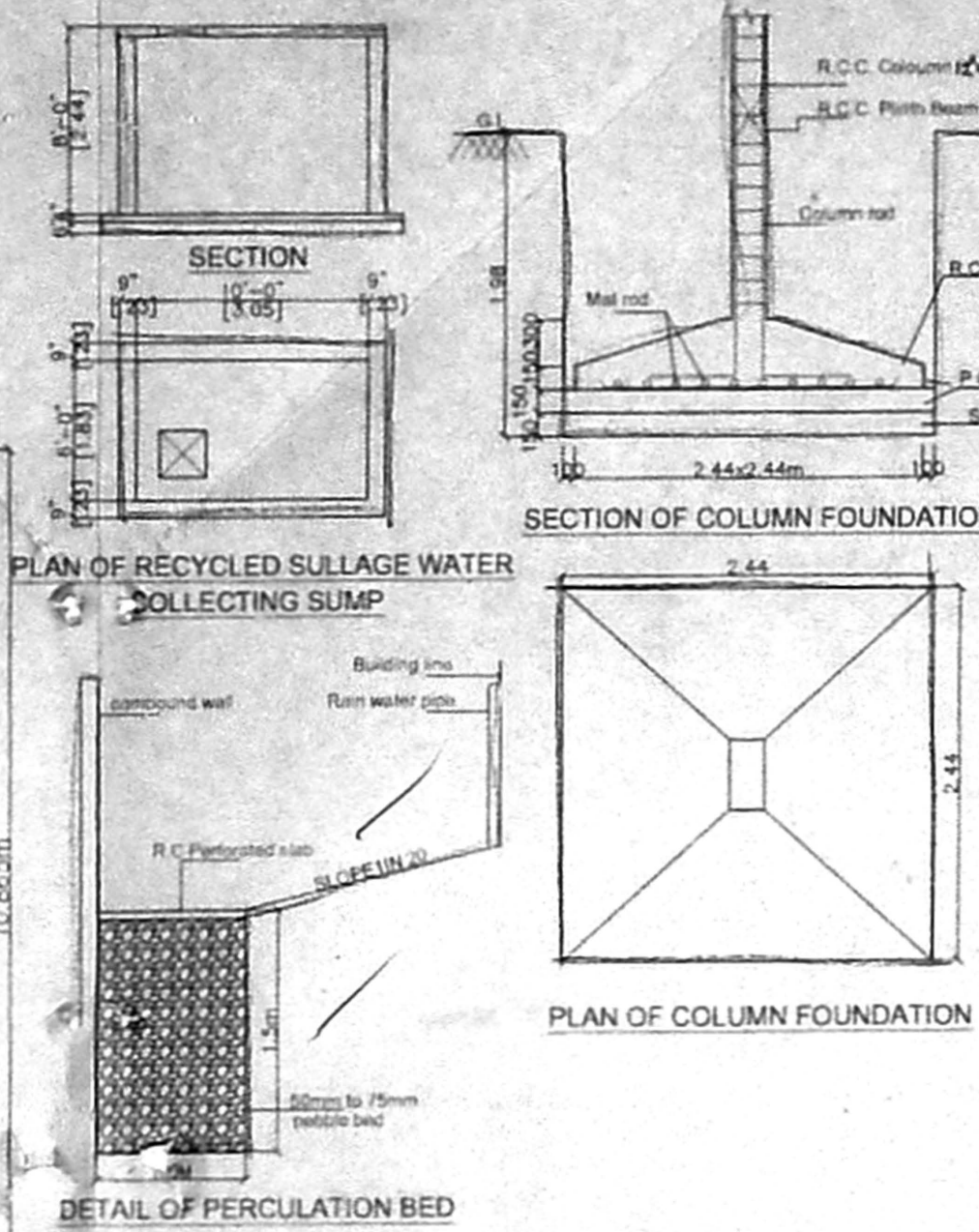
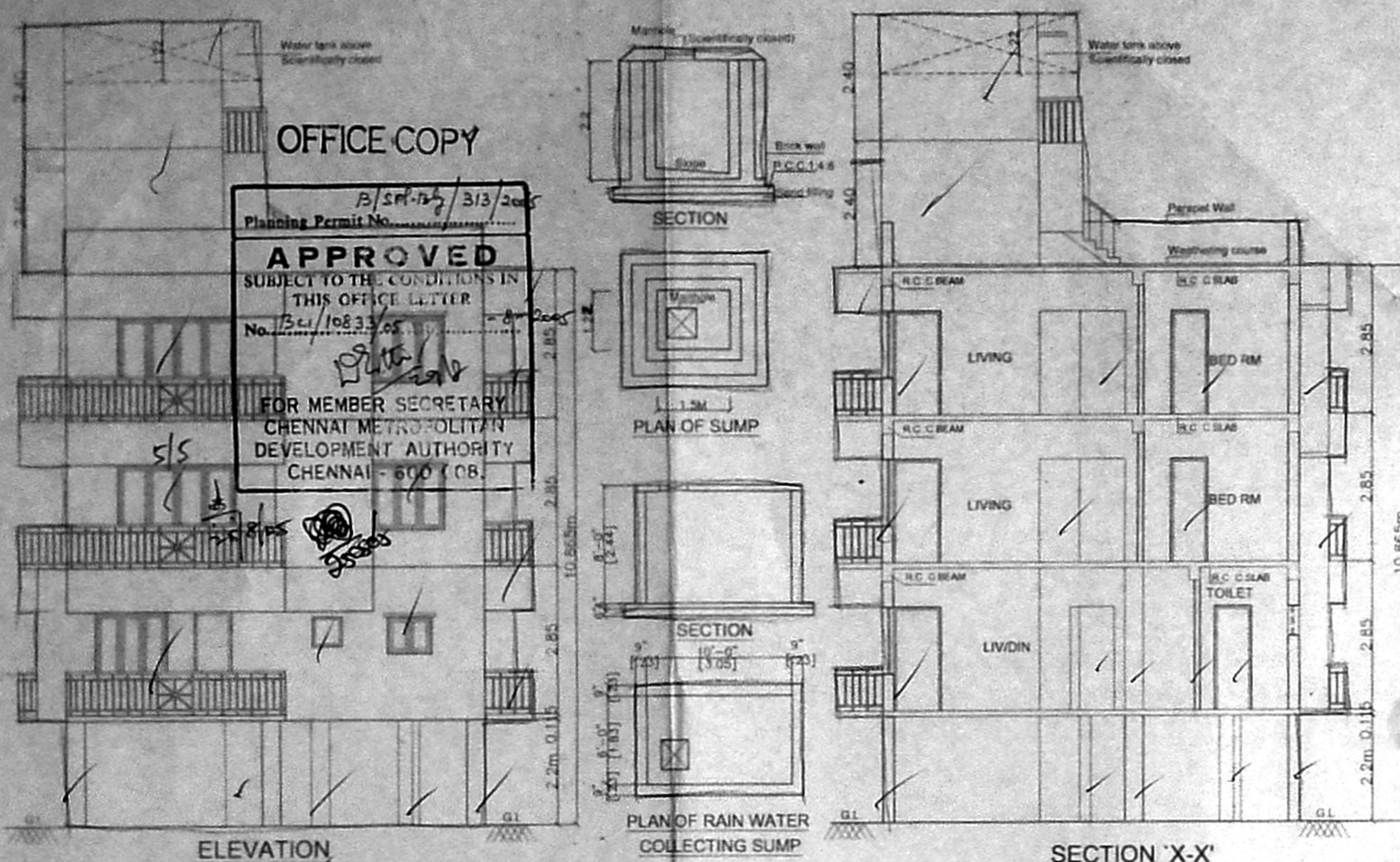


OFFICE COPY

B/SF-14/313/2005
 Planning Permit No. 134/10833/05
APPROVED
 SUBJECT TO THE CONDITIONS IN THIS OFFICE LETTER
 No. 134/10833/05
 FOR MEMBER SECRETARY
 CHENNAI METROPOLITAN
 DEVELOPMENT AUTHORITY
 CHENNAI - 600 008



SCHEDULE OF JOINERY

S.No	Qty	Description
1	1	C.W PANEL DOOR
2	1	C.W FLUSH DOOR
3	1	FRENCH WINDOW
4	1	C.W GLAZED WINDOW
5	1	C.W GLAZED WINDOW
6	1	C.W GLAZED WINDOW
7	1	C.W GLAZED WINDOW
8	1	C.W GLAZED WINDOW
9	1	C.W GLAZED WINDOW
10	1	C.W GLAZED WINDOW
11	1	C.W GLAZED WINDOW
12	1	C.W GLAZED WINDOW
13	1	C.W GLAZED WINDOW
14	1	C.W GLAZED WINDOW
15	1	C.W GLAZED WINDOW
16	1	C.W GLAZED WINDOW
17	1	C.W GLAZED WINDOW
18	1	C.W GLAZED WINDOW
19	1	C.W GLAZED WINDOW
20	1	C.W GLAZED WINDOW
21	1	C.W GLAZED WINDOW
22	1	C.W GLAZED WINDOW
23	1	C.W GLAZED WINDOW
24	1	C.W GLAZED WINDOW
25	1	C.W GLAZED WINDOW
26	1	C.W GLAZED WINDOW
27	1	C.W GLAZED WINDOW
28	1	C.W GLAZED WINDOW
29	1	C.W GLAZED WINDOW
30	1	C.W GLAZED WINDOW
31	1	C.W GLAZED WINDOW
32	1	C.W GLAZED WINDOW
33	1	C.W GLAZED WINDOW
34	1	C.W GLAZED WINDOW
35	1	C.W GLAZED WINDOW
36	1	C.W GLAZED WINDOW
37	1	C.W GLAZED WINDOW
38	1	C.W GLAZED WINDOW
39	1	C.W GLAZED WINDOW
40	1	C.W GLAZED WINDOW
41	1	C.W GLAZED WINDOW
42	1	C.W GLAZED WINDOW
43	1	C.W GLAZED WINDOW
44	1	C.W GLAZED WINDOW
45	1	C.W GLAZED WINDOW
46	1	C.W GLAZED WINDOW
47	1	C.W GLAZED WINDOW
48	1	C.W GLAZED WINDOW
49	1	C.W GLAZED WINDOW
50	1	C.W GLAZED WINDOW
51	1	C.W GLAZED WINDOW
52	1	C.W GLAZED WINDOW
53	1	C.W GLAZED WINDOW
54	1	C.W GLAZED WINDOW
55	1	C.W GLAZED WINDOW
56	1	C.W GLAZED WINDOW
57	1	C.W GLAZED WINDOW
58	1	C.W GLAZED WINDOW
59	1	C.W GLAZED WINDOW
60	1	C.W GLAZED WINDOW
61	1	C.W GLAZED WINDOW
62	1	C.W GLAZED WINDOW
63	1	C.W GLAZED WINDOW
64	1	C.W GLAZED WINDOW
65	1	C.W GLAZED WINDOW
66	1	C.W GLAZED WINDOW
67	1	C.W GLAZED WINDOW
68	1	C.W GLAZED WINDOW
69	1	C.W GLAZED WINDOW
70	1	C.W GLAZED WINDOW
71	1	C.W GLAZED WINDOW
72	1	C.W GLAZED WINDOW
73	1	C.W GLAZED WINDOW
74	1	C.W GLAZED WINDOW
75	1	C.W GLAZED WINDOW
76	1	C.W GLAZED WINDOW
77	1	C.W GLAZED WINDOW
78	1	C.W GLAZED WINDOW
79	1	C.W GLAZED WINDOW
80	1	C.W GLAZED WINDOW
81	1	C.W GLAZED WINDOW
82	1	C.W GLAZED WINDOW
83	1	C.W GLAZED WINDOW
84	1	C.W GLAZED WINDOW
85	1	C.W GLAZED WINDOW
86	1	C.W GLAZED WINDOW
87	1	C.W GLAZED WINDOW
88	1	C.W GLAZED WINDOW
89	1	C.W GLAZED WINDOW
90	1	C.W GLAZED WINDOW
91	1	C.W GLAZED WINDOW
92	1	C.W GLAZED WINDOW
93	1	C.W GLAZED WINDOW
94	1	C.W GLAZED WINDOW
95	1	C.W GLAZED WINDOW
96	1	C.W GLAZED WINDOW
97	1	C.W GLAZED WINDOW
98	1	C.W GLAZED WINDOW
99	1	C.W GLAZED WINDOW
100	1	C.W GLAZED WINDOW

- SPECIFICATION**
- P.C.C IN M-20 Grade
 - M-25 GRADE CONCRETE TO BE USED FOR R.C.C WORKS
 - 230MM BRICK WORK WITH M-15 Revised
 - 115MM BRICK WORK WITH M-15 Revised
 - PLASTERING WITH M-20 G.C.M 1:4
 - PLASTERING THE WALLS WITH M-20 G.C.M 1:4
 - WEATHERING COURSE IN BRICK JELLY LIME CONCRETE WITH A COURSE OF FLAT TILES
 - THE O.H.T IS SCIENTIFICALLY CLOSED
 - THE U.G SUMP IS SCIENTIFICALLY CLOSED
 - ALL W.C'S IN GROUND FLOOR RAISED BY 0.90M FROM G.L
 - PROVISION FOR SOLAR WATER HEATER SYSTEM 1250 LPD

AREA STATEMENT

	SQ.FT	SQ.M
PLOT AREA AS PER (PATTA):	4174.00	387.77
PROPOSED CONSTRUCTION		
STILT FLOOR AREA	188.91	17.55
FIRST FLOOR AREA	1914.16	177.83
SECOND FLOOR AREA	1908.78	177.33
THIRD FLOOR AREA	1908.78	177.33
TOTAL BUILTUP AREA	5920.63	550.04
F.S.I APPLIED FOR	1.418	
PLOT COVERAGE	45.65%	

LEGEND

PROPOSED CONSTRUCTION: [Symbol]

BOUNDARY LINE: [Symbol]

ROADS: [Symbol]

OWNER

[Signature]

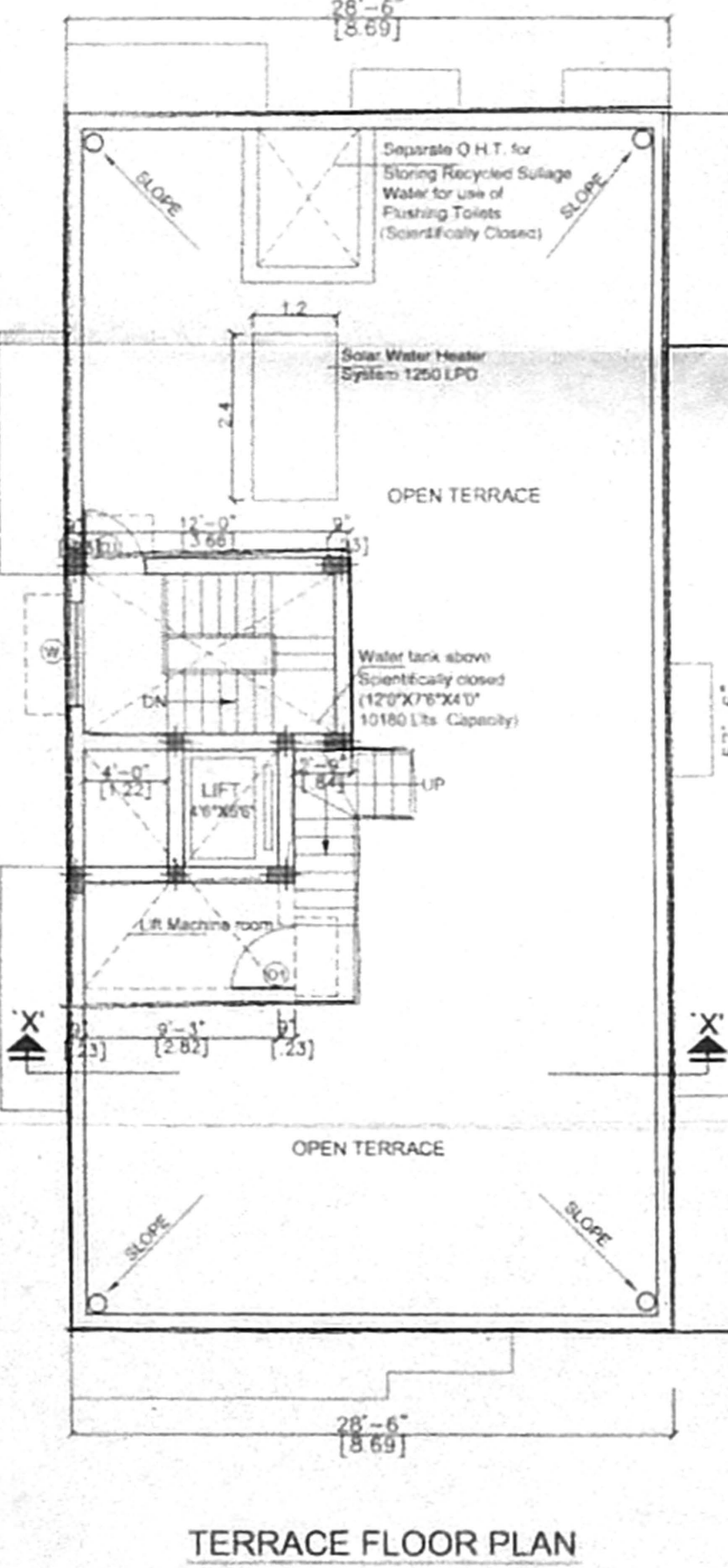
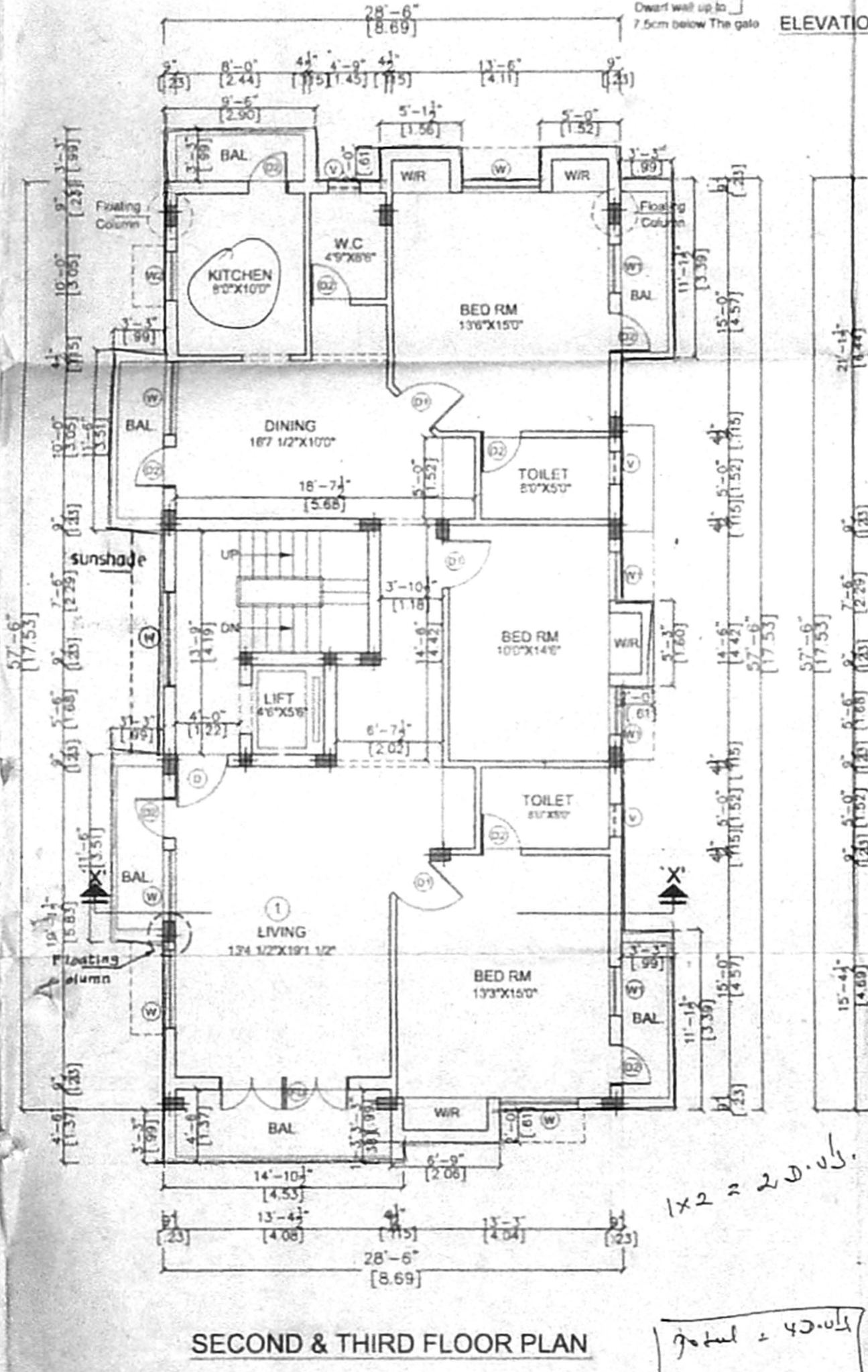
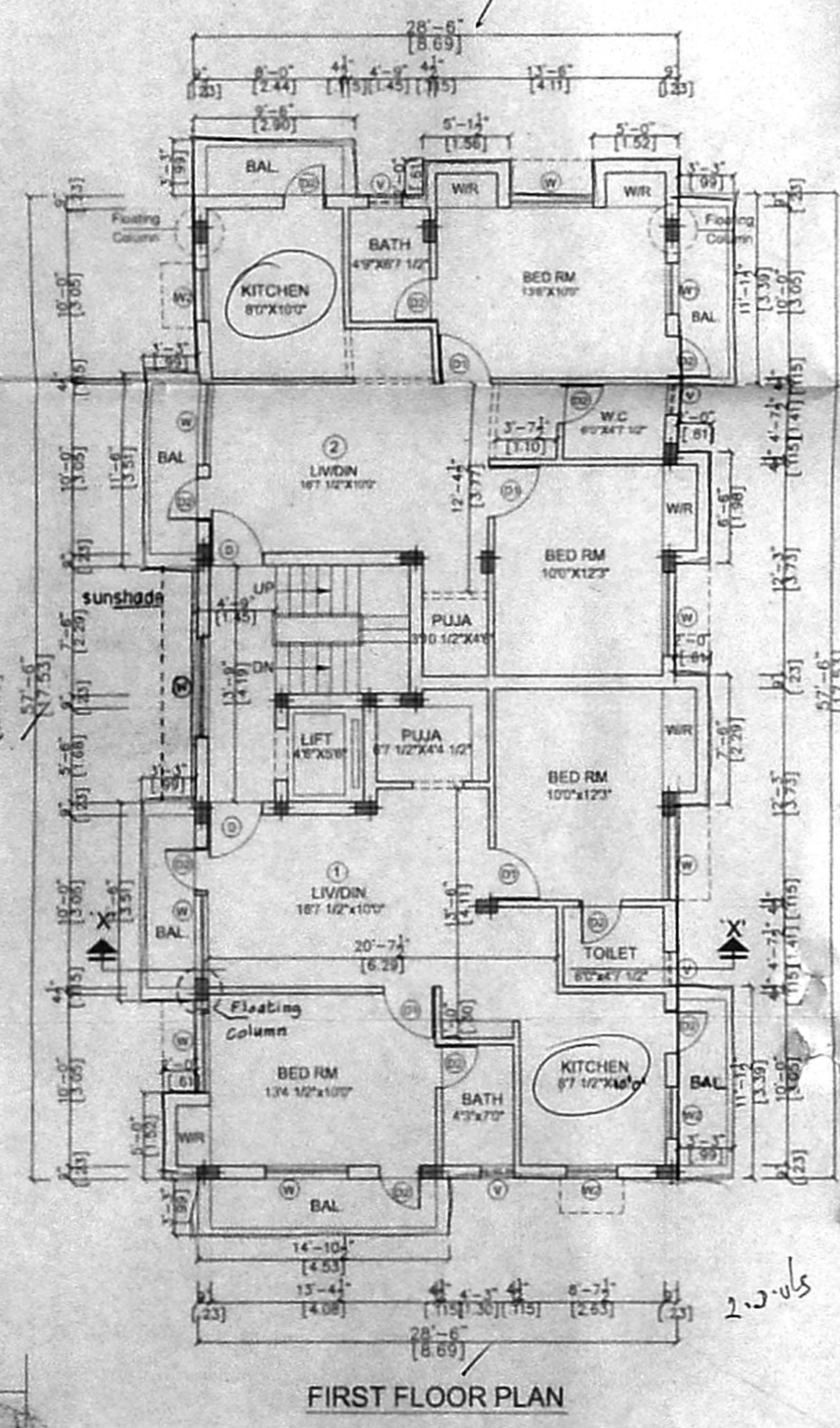
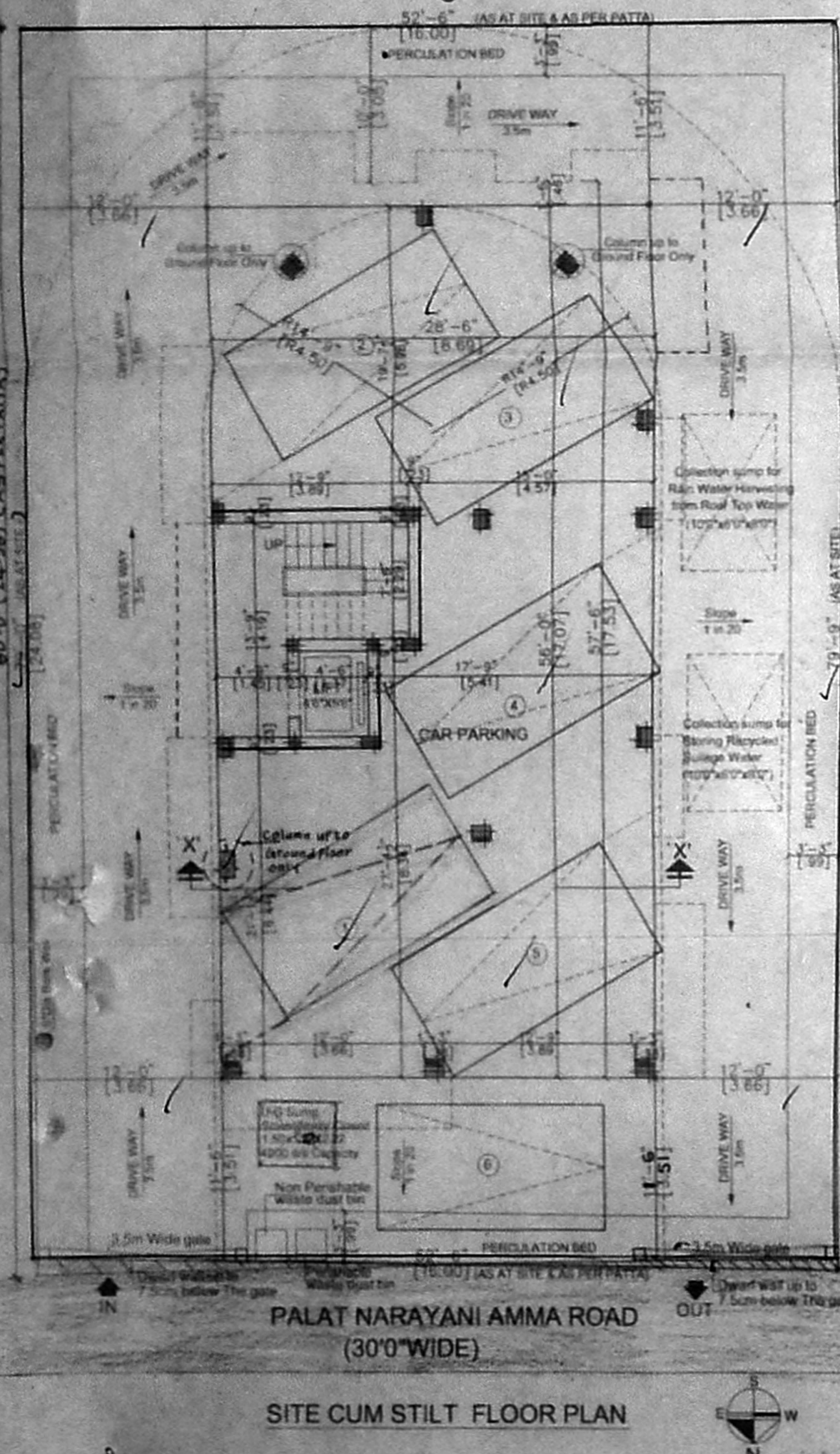
JOB TITLE

PLAN SHOWING THE PROPOSED RESIDENTIAL APARTMENTS AT OLD D.No.3, NEW D.No.5, PALAT NARAYANI AMMA ROAD, MAHALINGAPURAM, CHENNAI - 34 BEARING R.S.No.622/68, BLOCK No.36 NUNGAMBAKKAM DIVISION, EGMORE - NUNGAMBAKKAM TALUK, CHENNAI DISTRICT, ZONE - VII, DIVISION No:107.

SCALE: 1:100 DATE: 16-03-05

LICENSED SURVEYOR

V. Srinivasan, A.I.A.
 Registered Architect - CA/98/19785
 Licensed Surveyor - Corporation of Chennai
 R.A. No. 344
 O-Block No.37, 17th St, Anna Nagar,
 Chennai - 600 040. Ph: 2 628 6529



1x2 = 20.05

90.00 = 45.05